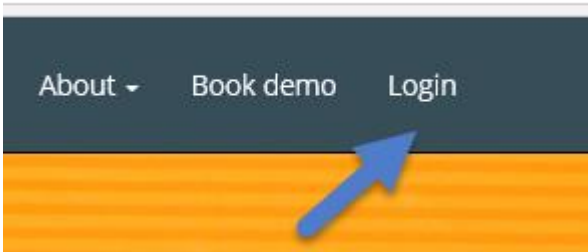


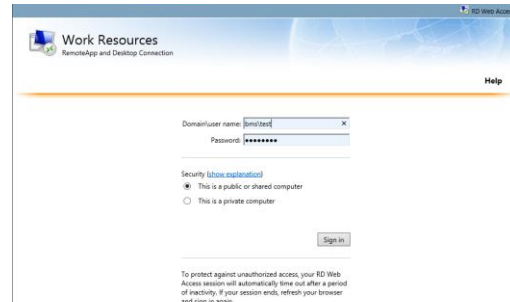
To access BMS Cloud Edition go to www.effectmakers.com and scroll to the top or bottom of the page.

1: Press "Login" in the right side:



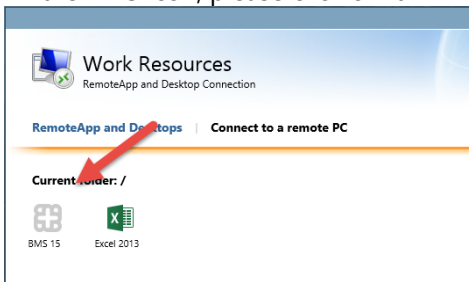
2: Sign in with BMS\[Your username].

On success full login you will see the icon for starting BMS:

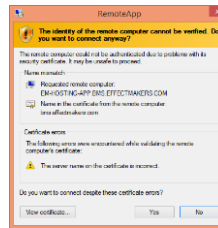


3: If you get an Unknown publisher warning then click Connect:

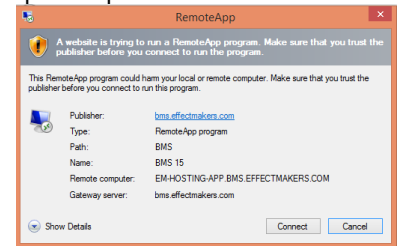
4: When correctly signed in you got the BMS Icon, please click on it



5: If this appears then click Yes

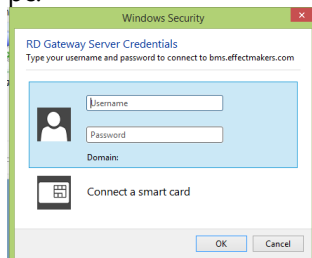


6: another warning can appear, please press connect

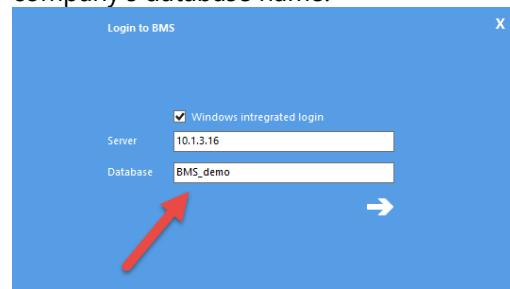


7: You might be prompted to fill in username and password again.

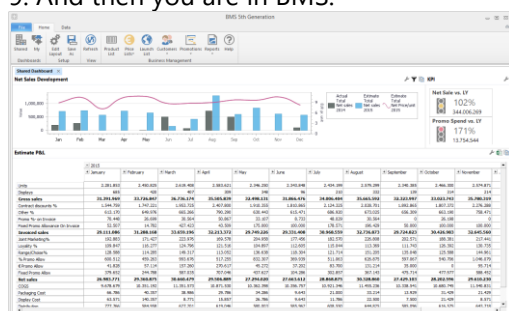
Note: this window may look different depending on the version of Windows on your pc.



8: Now you are ready to start BMS. The first time you login you must enter your company's database name.



9: And then you are in BMS:



Network requirements:

Port 80 and 443 must be open in your firewall/gateway.

Pc requirements:

The pc must run Windows XP or later Internet explorer Remote desktop client to access the Microsoft RemoteApp

Support: Write to support@effectmakers.com